



STAINLESS STEEL

DEALERS: SINCE 1975



Stockist & Authorised MoU Channel Partners of
Jindal Stainless Steel

A blurred industrial background showing a factory floor with various machinery, pipes, and a large circular object hanging from a crane.

ABOUT US

Laxmi Steel House was Established in the year 1975. Throughout these years we have had an exponential growth being one amongst the biggest suppliers for 50 Years in Tamil Nadu. Our growth has been backed by the excellence of our people , customer , value driven business operations.

At Present, We are certified Channel Partners and MoU Dealers of Jindal Stainless Steel. We deal in Stainless Steel Sheets & Plate, Stainless Steel Coils, Strips , Slits & Shims of Grades **200 Series , 300 Series , 400 Series Duplex & Super Duplex**. We can also arrange High Nickel Grades through our established channel.

Our dedication to excellence and a customer-centric approach has enabled us to serve a diverse clientele across various industries in all across Tamil Nadu , AP , Kerala & Karnataka



WHY CHOOSE US?



High Quality - Prime

We supply export quality in compliance with the industry standards and specifications.



Wide Range Of Products

Ready stock upto 750+ Metric Tons of Sheets , Coils & Plates



Logistic Support

We ensure that materials are delivered in time and good condition



Value-Added Processing

Shearing, CTL, Slitting, Decoling, Mirror / Polishing / Matt / PVC Coating



Packing & Handling

We do pallet packing with a commitment of delivering your materials without any scratches



Test Certificate

Our test Certificate quality and compliance is in place with the industry standards and specifications.



Long lasting Relationship

Right grade, finish, and form for the customer's specific application. We can help you choose the most suitable material that meets your project's performance criteria and budget.

PRODUCT RANGE

Stainless Steel Sheets



Width Size in mm: 1000 , 1250 , 1500 , 2000

Thickness Size in mm: 0.4 to 3.0

Finishing: 2B , 2B+PVC , No.1/HR , Bright Annealed , 8K Mirror , Matt

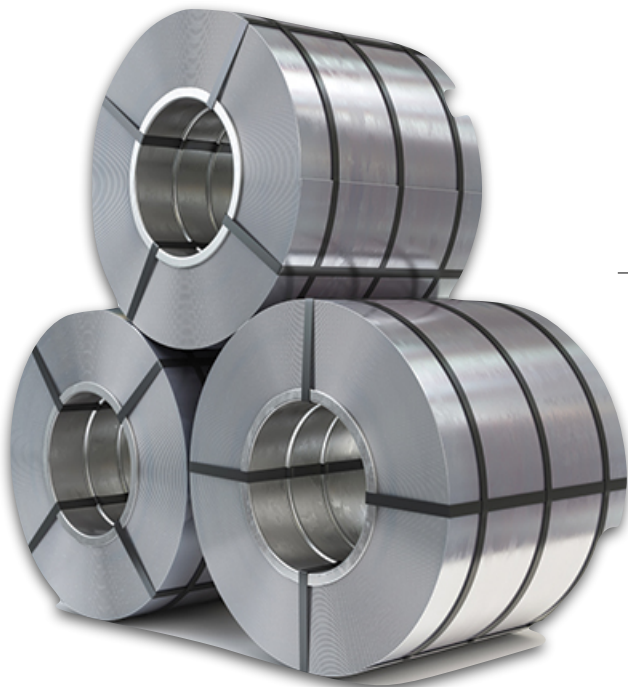
Grades

200 Series: 201 , 202 , 202 CU , 204 , JT , J4

300 Series: 301 , 304/L , 309/S , 310/S , 316/L , 321 , 347 , X5CRINI18-10

400 Series: 409/M , 410/S , 430 , 441 , 437 , X2CRNi-12

Stainless Steel Coils



Width Size in mm: 1000 , 1250 , 1500 , 2000

Thickness Size in mm: 0.2 to 8.0

Finishing: 2B , 2B+ PVC , No.1/HR , Bright Annealed , 8K Mirror , Matt

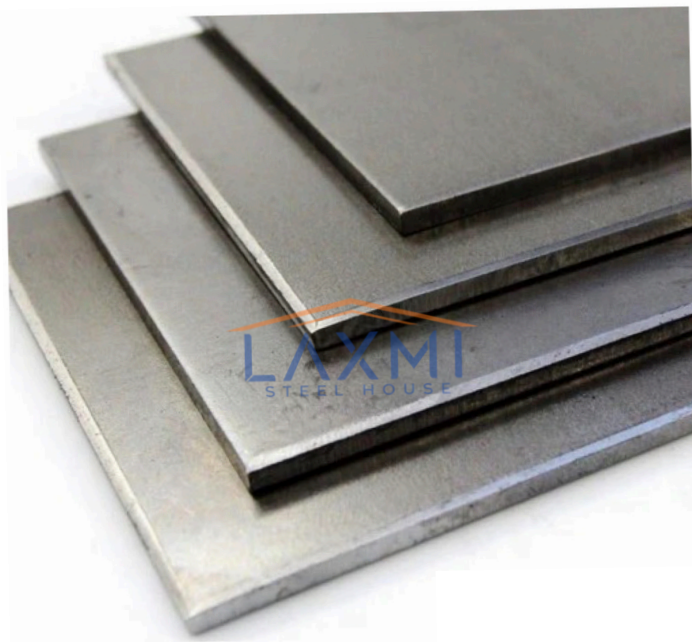
Grades

200 Series: 201 , 202 , 202 CU , 204 , JT , J4

300 Series: 301 , 304/L , 309/S , 310/S , 316/L , 321 , 347 , X5CRINI18-10

400 Series: 409/M , 410/S , 430 , 441 , 437 , X2CRNi-12

Stainless Steel Plates



Width Size in mm: 1000 , 1250 , 1500 , 2000

Thickness Size in mm: 3.0 to 100.0

Finishing: 2B , 2B+ PVC, No.1/HR

Grades

200 Series: JT , 202

300 Series: 301 , 304/L, 309/S, 310/S , 316/L , 321 , 347 , X5CRINI18-10

400 Series: 409/M, 410/S , 430 , 441 ,437 , X2CRNi-12

SURFACE FINISH	DEFINITION	APPLICATIONS
No. 1	Hot rolled annealed, shot blasted and pickled.	Pipes, tubing, chemical tank, general fabrication
No. 2	Dull Cold rolled annealed and pickled.	Deep drawn utensils, heat exchanger, exhaust pipe
No. 2B	Cold rolled annealed and pickled and skin passed; given an appropriate luster by again cold rolling.	Food industry, kitchen utensils, medical equipment, construction material
BA	Bright annealed finish; processed with bright heat treatment after cold rolling.	Decorative usage, kitchen utensils, electric equipment, building construction
No. 3	Cold rolled annealed and pickled and polished with 100 to 120 grit.	Kitchen utensils, building construction, medical equipment
No. 4	Cold rolled annealed and pickled and polished with 150 to 180 grit.	Kitchen utensils, building construction, medical equipment
Scotch Brite	Very fine hairline finish generated by polishing with rolls made out of scotch brite material.	Architectural purposes, railway cabins, elevator interiors, paneling, kitchen appliances

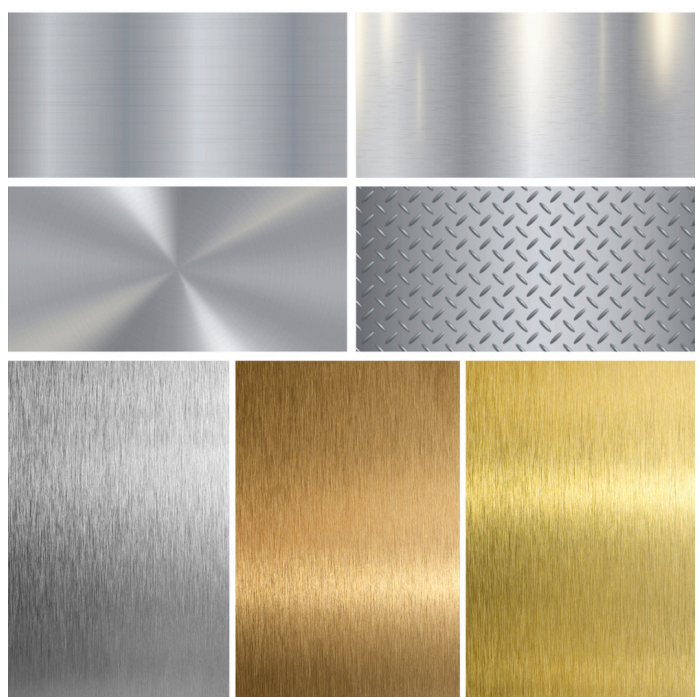
Stainless Steel Design Sheets

Grades : 202 , 304 , 441

Width Size in mm: 1250

Thickness Size in mm: 0.6 to 8.0

Finishing: No.8 Mirror , Hairline ,
Matt , No.1 Finish



Types of Design Sheets

Colour Coated Sheets : Gold, Rose Gold, Bronze , Black

Silver Coated Sheet : Honeycomb, Box Moonrock , Lenin

Embossed Sheet : Chequered Plates

GRADE DETAILS

CHEMICAL COMPOSITION

MECHANICAL PROPERTIES

Material	JSL Designation / Grade	%C (Max)	%Mn (Max)	%P (Max)	%S (Max)	%Si (Max)	%Cr	%Ni	%Mo	N PPM (Max)	%OTHERS	Tensile Strength MPa (min)	Yield strength MPa (min)	%Elongation (min)	Hardness Rockwell B (max)
Austenitic Cr-Ni	J-201#	0.15	5.5-7.5	0.060	0.030	1.00	16.00-18.00	3.50-5.50	-	2500	-	655	310	40	100
Austenitic Cr-Ni	J-201L	0.030	5.5-7.5	0.045	0.030	0.75	16.00-18.00	3.50-5.50	-	2500	-	655	260	40	95
Austenitic Cr-Ni	J-201LN	0.030	6.4-7.5	0.045	0.015	0.75	16.00-17.50	4.00-5.00	-	1000-2500	Cu = 1.0 Max.	655	310	45	100
Austenitic Cr-Ni	J-202	0.15	7.5-10.0	0.060	0.030	1.00	17.00-19.00	4.00-6.00	-	2500	-	620	260	40	100
Austenitic Cr-Ni	J-204 Cu	0.10	6.5-9.0	0.060	0.010	0.75	16.00-17.50	1.50-3.50	-	1000-2000	Cu = 2.0-4.0	620	310	40	100
Austenitic Cr-Ni	JSLAUS (II)	0.08	6.0-8.0	0.070	0.010	0.75	16.00-18.00	4.00-6.00	-	1000	Cu = 1.5-2.0	550	205	40	95
Austenitic Cr-Ni	J-4	0.10	8.50-10.0	0.080	0.010	0.75	15.00-16.00	1.00-2.00	-	2000	Cu = 1.5-2.0	650	325	40	100
Austenitic Cr-Ni	J-301	0.15	2.00	0.045	0.030	1.00	16.00-18.00	6.00-8.00	-	1000	-	515	205	40	95
Austenitic Cr-Ni	J-301L	0.030	2.00	0.045	0.030	1.00	16.00-18.00	6.00-8.00	-	2000	-	550	220	45	100
Austenitic Cr-Ni	J-301LN	0.030	2.00	0.045	0.030	1.00	16.00-18.00	6.00-8.00	-	700-2000	-	550	240	45	100
Austenitic Cr-Ni	J-304	0.07	2.00	0.045	0.030	0.75	17.50-19.50	8.00-10.50	-	1000	-	515	205	40	92
Austenitic Cr-Ni	J-304M	0.04-0.10	2.00	0.045	0.030	0.75	18.00-20.00	8.00-10.50	-	1000	-	515	205	40	92
Austenitic Cr-Ni	J-304L	0.030	2.00	0.045	0.030	0.75	17.50-19.50	8.00-12.00	-	1000	-	485	170	40	92
Austenitic Cr-Ni	J-304LN	0.030	2.00	0.045	0.030	0.75	18.00-20.00	8.00-12.00	-	1000-1600	-	515	205	40	95
Austenitic Cr-Ni	J-309	0.20	2.00	0.045	0.030	0.75	22.00-24.00	12.00-15.00	-	-	-	515	205	40	95
Austenitic Cr-Ni	J-309S	0.08	2.00	0.045	0.030	0.75	22.00-24.00	12.00-15.00	-	-	-	515	205	40	95
Austenitic Cr-Ni	J-310	0.25	2.00	0.045	0.030	1.50	24.00-26.00	19.00-22.00	-	-	-	515	205	40	95
Austenitic Cr-Ni	J-310S	0.08	2.00	0.045	0.030	1.50	24.00-26.00	19.00-22.00	-	-	-	515	205	40	95
Austenitic Cr-Ni	J-316	0.08	2.00	0.045	0.030	0.75	16.00-18.00	10.00-14.00	2.00-3.00	1000	-	515	205	40	95
Austenitic Cr-Ni	J-316L	0.030	2.00	0.045	0.030	0.75	16.00-18.00	10.00-14.00	2.00-3.00	1000	-	485	170	40	95
Austenitic Cr-Ni	J-316LN	0.030	2.00	0.045	0.030	0.75	16.00-18.00	10.00-14.00	2.00-3.00	1000-1600	-	515	205	40	95
Austenitic Cr-Ni	J-316Ti	0.08	2.00	0.045	0.030	0.75	16.00-18.00	10.00-14.00	2.00-3.00	1000	Ti=5X(C+N) Min., 0.70 Max.	515	205	40	95
Austenitic Cr-Ni	J-317	0.08	2.00	0.045	0.030	0.75	18.00-20.00	11.00-15.00	3.00-4.00	1000	-	515	205	35	95
Austenitic Cr-Ni	J-317L	0.030	2.00	0.045	0.030	0.75	18.00-20.00	11.00-15.00	3.00-4.00	1000	-	515	205	40	95
Austenitic Cr-Ni	J-317LN	0.030	2.00	0.045	0.030	0.75	18.00-20.00	11.00-15.00	3.00-4.00	1000-2200	-	550	240	40	95
Austenitic Cr-Ni	J-317Z	0.030	1.00	0.030	0.030	1.00	17.50-19.00	14.50-16.50	3.80-4.50	1500-2100	Cu = 2.8-4.0	515	205	45	95
Austenitic Cr-Ni	J-321	0.08	2.00	0.045	0.030	0.75	17.00-19.00	9.00-12.00	-	1000	Ti=5X(C+N) Min., 0.70 Max.	515	205	40	95
Austenitic Cr-Ni	J-347	0.08	2.00	0.045	0.030	0.75	17.00-19.00	9.00-13.00	-	-	Nb = 10XC Min., 1.00 Max.	515	205	40	92
Martensitic	J-410	0.08-0.15	1.00	0.040	0.030	1.00	11.50-13.50	0.75 max	-	-	-	450	205	20	96
Martensitic	J-415	0.05	0.50-1.00	0.030	0.030	0.60	11.50-14.00	3.50-5.50	0.50-1.00	-	-	795	620	15	32rc
Martensitic	J-420	0.15 min	1.00	0.040	0.030	1.00	12.00-14.00	0.75 max	0.50 max	-	-	690	-	15	96
Martensitic	J-431	0.20	1.00	0.040	0.030	1.00	15.00-17.00	1.25-2.50	-	-	-	-	-	-	29rc
Martensitic	JBS	0.6-0.7	1.00	0.030	0.015	0.75	12.50-13.50	-	-	-	-	-	-	-	-
Martensitic	J-405	0.08	1.00	0.040	0.030	1.00	11.50-14.50	0.60	-	-	Al = 0.10-0.30	415	170	20	88
Martensitic	J-409	0.030	1.00	0.040	0.020	1.00	10.50-11.70	0.50 max	-	-	Ti = 6X (C+N) Min., 0.5 Max.	380	170	20	88
Martensitic	J-409L	0.030	1.00	0.040	0.030	1.00	10.50-11.70	0.50 max	-	300	Ti = 6X (C+N) Min., 0.75 Max.	380	170	20	88
Martensitic	J-410S	0.08	1.00	0.040	0.030	1.00	11.50-13.50	0.60 max	-	-	-	415	205	22	89
Martensitic	J-430	0.12	1.00	0.040	0.030	1.00	16.00-18.00	0.75 max	-	-	-	450	205	22	89
Martensitic	J-430T	0.030	1.00	0.040	0.030	1.00	16.00-19.00	-	-	-	Ti = 0.10-1.00	360	175	22	89
Martensitic	J-436	0.120	1.00	0.040	0.030	1.00	16.00-18.00	-	0.75-1.25	-	-	450	240	22	90
Martensitic	J-436L	0.025	1.00	0.040	0.030	1.00	16.00-19.00	-	0.75-1.25	250	Nb or Ti or % combination = 6X (C+N) Min., 0.80 Max.	410	245	20	96
Martensitic	J-439	0.030	1.00	0.040	0.030	1.00	17.00-19.00	0.50 max	-	300	Min., 1.10 Max.	415	205	22	89
Martensitic	J-441	0.030	1.00	0.040	0.015	1.00	17.50-18.50	-	-	-	Nb = 3XC C+0.3 Min. 1% Max., Ti = 0.1-0.6%	430	250	18	88
Ferritic	J-499M	0.030	0.8-1.5	0.030	0.030	1.00	10.80-12.50	1.50 max	-	300	Ti = 0.75 Max.	450	275	20	90
Duplex (Austenitic + Ferritic)	J-2205	0.030	2.00	0.030	0.020	1.00	22.00-23.00	4.50-6.50	3.0-3.50	1400-2000	-	655	450	25	31rc
Duplex (Austenitic + Ferritic)	J-2304	0.030	2.50	0.040	0.030	1.00	21.00-24.50	3.00-5.50	0.05-0.60	500-2000	Cu 0.05 Min.-0.60 Max.	600	400	25	32rc
Duplex (Austenitic + Ferritic)	J-31803	0.030	2.00	0.030	0.020	1.00	21.00-23.00	4.50-6.50	2.50-3.50	800-2000	-	620	450	25	31rc

JSLA MILL TEST CERTIFICATE
 In Accordance with EN 10204 Type 3.1

Customer: LANSI STEEL HOUSE
 City: Chennai
 Material Specification: STAINLESS STEEL

Certificate No.: JSL-INDIA/2024-240006012458
 Date: 23/01/2024
 Vehicle No.: 2023028123

Sl. No.	Batch No.	Parent Coil No.	Plate No.	Weight (kg)	NO. OF Pcs	Heat No.	Thk.	Width	Length	Finish	Edge	Quality
1	KA31803	000001617	000001617	1200	44	4011823	1.50	1500.00	3000.00	2B	Hot Edge	PREMI

CHEMICAL ANALYSIS (TABLE)

Heat No.	C	Mn	S	P	Si	Cr	Ni	Mo	Other
4011823	0.03	1.50	0.005	0.005	0.03	17.50	9.00	0.50	-

MECHANICAL PROPERTIES-SAMPLE DIRECTION - TRANSVERSE

Sl. No.	Roll No.	Refr. No.	Refr. No.	Refr. No.	Refr. No.	Refr. No.	Refr. No.	Refr. No.
1	203	203	203	203	203	203	203	203

ADDITIONAL INFORMATION

1. MATERIAL HAS BEEN TESTED ACCORDING TO THE SCHEDULE OF TESTING & INSPECTION CONTAINED IN EN 10204 TYPE 3.1.

2. ABOVE MATERIAL ALSO CONFORMS TO EN 10204 TYPE 3.1.

3. MATERIALS CONFORM TO THE SPECIFICATION FOR ASTM A31803/31.8 AS PER EN 10204 TYPE 3.1.

JSLA MILL TEST CERTIFICATE
 In Accordance with EN 10204 Type 3.1

Customer: LANSI STEEL HOUSE
 City: Chennai
 Material Specification: STAINLESS STEEL

Certificate No.: JSL-INDIA/2024-240006012459
 Date: 23/01/2024
 Vehicle No.: 2023028123

Sl. No.	Batch No.	Parent Coil No.	Plate No.	Weight (kg)	NO. OF Pcs	Heat No.	Thk.	Width	Length	Finish	Edge	Quality
1	KA31803	000001617	000001617	1200	44	4011823	1.50	1500.00	3000.00	2B	Hot Edge	PREMI

CHEMICAL ANALYSIS (TABLE)

Heat No.	C	Mn	S	P	Si	Cr	Ni	Mo	Other
4011823	0.03	1.50	0.005	0.005	0.03	17.50	9.00	0.50	-

MECHANICAL PROPERTIES-SAMPLE DIRECTION - TRANSVERSE

Sl. No.	Roll No.	Refr. No.	Refr. No.	Refr. No.	Refr. No.	Refr. No.	Refr. No.	Refr. No.
1	203	203	203	203	203	203	203	203

ADDITIONAL INFORMATION

1. MATERIAL HAS BEEN TESTED ACCORDING TO THE SCHEDULE OF TESTING & INSPECTION CONTAINED IN EN 10204 TYPE 3.1.

2. ABOVE MATERIAL ALSO CONFORMS TO EN 10204 TYPE 3.1.

3. MATERIALS CONFORM TO THE SPECIFICATION FOR ASTM A31803/31.8 AS PER EN 10204 TYPE 3.1.

JSLA MILL TEST CERTIFICATE
 In Accordance with EN 10204 Type 3.1

Customer: LANSI STEEL HOUSE
 City: Chennai
 Material Specification: STAINLESS STEEL

Certificate No.: JSL-INDIA/2024-240006012460
 Date: 23/01/2024
 Vehicle No.: 2023028123

Sl. No.	Batch No.	Parent Coil No.	Plate No.	Weight (kg)	NO. OF Pcs	Heat No.	Thk.	Width	Length	Finish	Edge	Quality
1	KA31803	000001617	000001617	1200	44	4011823	1.50	1500.00	3000.00	2B	Hot Edge	PREMI

CHEMICAL ANALYSIS (TABLE)

Heat No.	C	Mn	S	P	Si	Cr	Ni	Mo	Other
4011823	0.03	1.50	0.005	0.005	0.03	17.50	9.00	0.50	-

MECHANICAL PROPERTIES-SAMPLE DIRECTION - TRANSVERSE/LONGITUDINAL

Sl. No.	Roll No.	Refr. No.	Refr. No.	Refr. No.	Refr. No.	Refr. No.	Refr. No.	Refr. No.
1	203	203	203	203	203	203	203	203

ADDITIONAL INFORMATION

1. MATERIAL HAS BEEN TESTED ACCORDING TO THE SCHEDULE OF TESTING & INSPECTION CONTAINED IN EN 10204 TYPE 3.1.

2. ABOVE MATERIAL ALSO CONFORMS TO EN 10204 TYPE 3.1.

3. MATERIALS CONFORM TO THE SPECIFICATION FOR ASTM A31803/31.8 AS PER EN 10204 TYPE 3.1.

CERTIFICATES



FEW INDUSTRIES WE SERVE



FABRICATORS



ARCHITECTURE &
CONSTRUCTION



COOKWARE & KITCHENWARE



ESCALATOR



ELEVATORS



INTERIORS & INFRASTRUCTURES



RAILWAYS



OIL AND GAS



FOOD PROCESSING INDUSTRIES



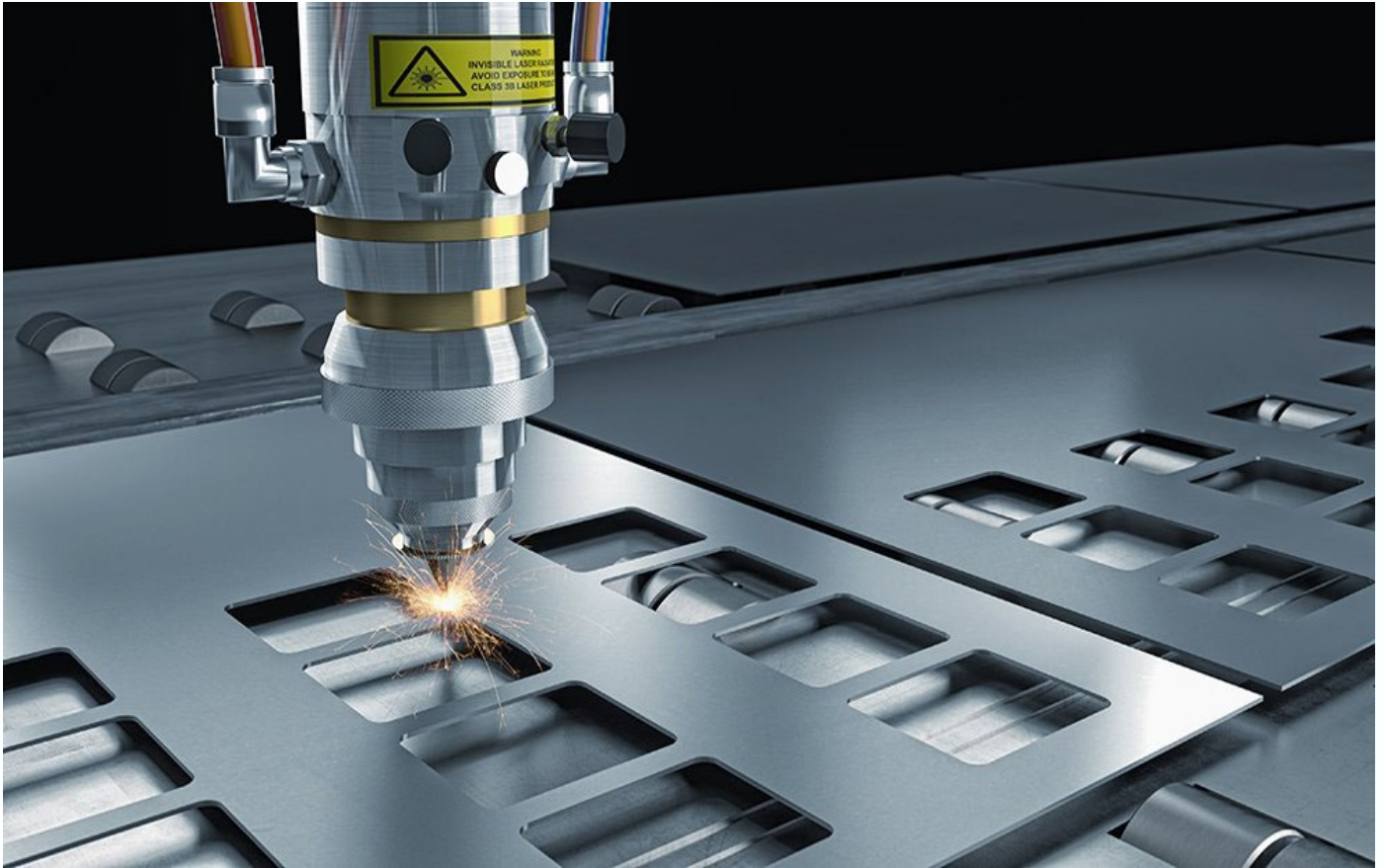
TANKER FABRICATORS



AEROSPACE INDUSTRIES



MARINE



YOUR RELIABLE SOURCE FOR STAINLESS STEEL

HEAD OFFICE & REGISTERED OFFICE :

178 Mint Street , Park Town , Chennai - 600003

Ph : 044-23463900 | Email ID : salesandmarketinglsh@gmail.com

Website : www.laxmisteelhouse.com M : +91 9176377878 | 7200003590

STOCKYARD & GODOWN LOCATION :

Stockyard : No. 13 & 15 Adinath Trade Complex , Madhavaram - Ch - 60

Godown : 3, Ibrahim Sahib Street , Chennai - 600079



Stockist & Authorised MoU Channel Partners of Jindal Stainless Steel